



# Central Connecticut Woodturners

A Chapter of the American Association of Woodturning

Dedicated to the Advancement of Woodturning

[www.ccwoodturners.org](http://www.ccwoodturners.org)



## Next Meeting

Tuesday Oct 23

Tuesday October 23rd at 7PM. CCWs meeting will be held at [Jim Kephart's](#) shop at 85 Hillard St., Manchester. Presentation will be on pyrography with Corey Anderson.

Sunday October 28th 1-4PM Open Shop at Jim Kephart's shop. Remember to RSVP if you are planning on going

Turn for Troops Turn-a-thon Sat & Sun Nov 10th & 11th Manchester Woodcraft

## Facebook

Facebook page:<http://www.facebook.com/#/groups/152704714844052/>

S e p t . 2 0 1 2

## 2012 Challenge 'Platters' (November 2012 Meeting)

Challenge consists of 3 categories, top winner gets prize

Basic Platter: \$20 Craft Supply gift cert & \$35 gift basket

Color/Texture: \$20 CraftSupply giftcert & \$35 gift basket

Carving/Piercing/Segmenting/Shape: \$20 Craft Supply gift cert & \$35 gift basket

### Prizes

Gift Baskets: 1 - wine/cheese/crackers

1 - fruit (local farm fruits/veggie/nuts)

1 - pie

## 2012 Growth Challenge ( January 2013 Meeting)

Challenge is for the Turner to show growth of their skills by showing multiple attempts at a project where each attempts shows progress over the previous one. Entrants will provide examples of each attempt and discuss what they learned as they grew.

### Prize:

\$52 hartville cert,

\$25 parkerville cert &

\$50 woodcraft cert

**Challenges will be judged by George, Jerry and Buster**

**Club Exhibitors**

Buster Shaw; 2 necklaces

Lynda Zibbideo; flower pot & weed pot

Butch Watson; Huge segmented vase

Eric Holmquist; 1 platter, 2 bowls, 1 pierced vase

Bob Friedrick; large vase

Albert D'antonio; sculptures

Jerry Sambrook; 2 hollow forms & offset thin goblet

Larry Graves; vase & pedestal container

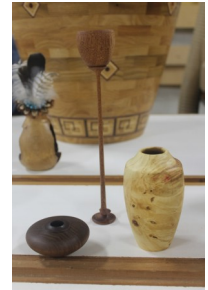
Dan Couture; bird house earrings

Chris Dudley; 2 pens & box

**Spouse Exhibitors**

Julie Pointkowski; handpainted birdhouses

Ernie Mellor; spindles



# Buster Shaw Demo

## Weed Pot





September 23rd was a bright, sunny wonderful day at the Coventry Farmer's Market. Paul Maulucci arranged for CCW to have a space at the market. This was an opportunity to demonstrate woodturning under a wide blue sky. Paul came with a full size lathe on wheels ready to wow the crowd with flying chips. Mike Orenstein brought his mini jet and was demonstrating top making. Lynda Zibbideo brought her Foredom to demonstrate power carving.



### Ken Rowe

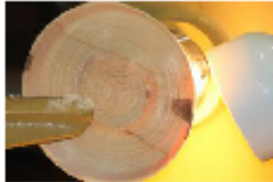
Club Member Ken Rowe won best in show in the wood division at the Durham fair. This piece was not turned, but the entire piece is made from wood, even the hinges.



## **Binh Pho demo**

September 8<sup>th</sup> a bunch of us gathered at Alicia & Butch Watson's house for the Binh Pho demonstration.

Binh started the day turning a thin walled end grain vessel. Mounted between centers, Binh created the tenon. Then he proceeded to amaze the crowd by using a light as a thickness gauge. If you can see through the walls, it is too thin!



Then there was a power point presentation of Binh's work. Binh's inspiration comes from all that is around him. Whether it is visiting a big city, a park or memories of his homeland of Vietnam, you will find Binh's interpretation. He also imparted to the group the Seven Changes & Growth;

- 1 - Knowing "Right from Wrong"  
Requires: being taught forgiveness
- 2 - Doing what is "Right"  
Requires: willpower, patience and compliance
- 3 - Doing the "Right" thing better  
Requires: practice, repetition, and commitment
- 4 - Eliminating distractions from the "right" more efficiently  
Requires: focus & discipline
- 5 - Copying how the best do it "right"  
Requires: insight seeing the invisibility
- 6 - Being/Doing "different"  
Requires: experimentation, vision and learning from experience
- 7 - Doing the impossible  
Requires: faith, risk of life and wanting to be first



Then we took a break for a pizza lunch.

The first part of the afternoon demo was on airbrush techniques. During the demo, Binh discussed tools, materials, surface preparation and treatment. He talked about creating a color scheme with transparent color. Binh explained the use of frisket and masking areas you want free from paint. Then on to the piercing and texturing with an NSK tool.

Although Binh is known for his thin walled vessels, coloring and piercing, those that attending the demo learned this and a lot more.



*Photos by Chris Dudley*



**Central Connecticut Woodturners**  
 c/o Carol Roffey  
 234 Reidy Hill Rd.  
 Amston, CT 06231



~ Legal Stuff ~

The Central Connecticut Woodturners (CCW) was founded in 1994 to support the needs of woodturners in the central Connecticut area. Its purpose is to promote a higher standard of excellence in woodturning by providing an ever expanding source of information and resources to its membership. Memberships are calendar basis from January 1 through December 31. Annual dues are \$35 or \$20 for six months or less.

**President:** George Upton

860-742-3271 uptonge@hotmai.com

**Vice President:** Chris Zibbideo

203-686-1207 lzibbideo@gmail.com

**Treasurer:** Alan Moltz

860-665-0284 alanmoltz@cox.net

**Secretary:** Eric Holmquist

860-654-9252 eric.holmquist@hs.utc.com

**Newsletter Editor:** Carol Roffey

860-989-4103 croffey@comcast.net

**Librarian:** Walter McMahon



**From I-84 Eastbound:**

- Take Exit 63
- At end of ramp, go Straight (Rt 83)
- Turn Right onto North Main
- At next light, turn Left onto Main
- At next light, turn Right onto Hilliard
- 85 Hilliard is the building just after the Time Machine hobby shop.

- Jim's shop is on the second floor.

**From I-84 Westbound:**

- Take Exit 63
- At end of ramp, go Right (Rt 30)
- At second light, turn Right onto Rt 83
- At next light, turn Left onto Main
- At next light, turn Right onto Hilliard

Central Connecticut Woodturners - Membership Information

New:  Renew:

Name: \_\_\_\_\_

Business Name: \_\_\_\_\_

Address: \_\_\_\_\_

Phone: \_\_\_\_\_ Email: \_\_\_\_\_

Dues (\$35) payable to:  
 Central Connecticut Woodturners  
 c/o **Alan Moltz**  
 21 Decosta Drive  
 Newington, CT 06111